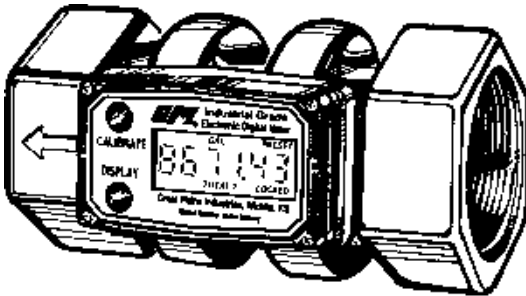


Industrial Grade **09 COMPUTER ELECTRONICS** Owner's Manual

*Computer Electronics
shown with 1 inch
and 2 inch Turbine
Housings which are
sold separately.*



NEMA
4 CE



5252 East 36th Street North
Wichita, KS USA 67220-3205
TEL: 316-686-7361
FAX: 316-686-6746

GREAT PLAINS INDUSTRIES, INC.

"A Great Plains Ventures Subsidiary"

www.gpi.net

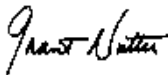
1-888-996-3837

To the owner . .

Congratulations on receiving your GPI Industrial Grade Computer Electronics. We are pleased to provide you with a product designed to give you maximum reliability and efficiency.

Our business is the design, manufacture, and marketing of liquid handling, agricultural, and recreational products. We succeed because we provide customers with innovative, reliable, safe, timely, and competitively-priced products. We pride ourselves in conducting our business with integrity and professionalism.

We are proud to provide you with a quality product and the support you need to obtain years of safe, dependable service.

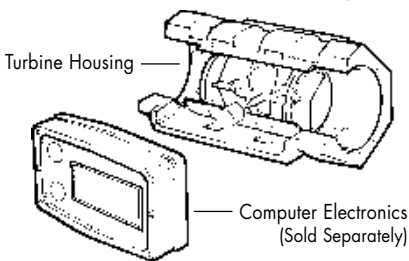


President
Great Plains Industries, Inc.

GENERAL INFORMATION

This manual will assist you in operating and maintaining the Computer Electronics of the GPI Industrial Grade Meters. (See Figure 1) Calibration details are given in this manual. Information on turbine housings and accessory modules are contained in other manuals. Please reference those as necessary.

Figure 1



For best results, take the time to fully acquaint yourself with all information about all components of your GPI Electronic Digital Metering System prior to installation and use.

TABLE OF CONTENTS

General Information	2
Installation	3
Operations	4
Calibration	5
User Configuration	8
Maintenance	9
Troubleshooting	10
Specifications	11
Parts	13
Service	13

If you need assistance, contact the distributor from whom you purchased your computer.



This symbol is used throughout the manual to call your attention to safety messages.

Warnings alert you to the potential for personal injury.

Cautions call your attention to practices or procedures which may damage your equipment.

Notes give information that can improve efficiency of operations.

It is your responsibility to make sure that all operators have access to adequate instructions about safe operating and maintenance procedures.

Safety Instructions

For your safety, review the major warnings and cautions below before operating your equipment.

1. This equipment is approved to handle only fluids which are compatible with all wetted materials.

2. When measuring flammable liquids, observe precautions against fire or explosion.
3. When handling hazardous liquids, always follow the liquid manufacturer's safety precautions.
4. When working in hazardous environments, always exercise appropriate safety precautions.
5. For best results, always verify accuracy before use.

Product Description

These computer electronics are designed specifically for use on GPI Industrial Grade Turbine Housings. They are also designed to work with several accessory output modules.

The CMOS, microprocessor-based electronics have extremely low power requirements and data retention capabilities in both RAM and ROM. Information is clearly displayed on a large 6-digit LCD readout with two-point floating decimal for totals from .01 to 999,999. All operations are easily accessed with the two buttons on the front panel.

Liquid flows through the turbine housing causing an internal rotor to spin. As the rotor spins, an electrical signal is generated in the pickup coil. This pulse data is translated from the turbine into calibrated flow units shown on the computer's readout.

Upon receipt, examine your equipment for visible damage. The computer is a precision measuring instrument and should be handled as such. If any items appear damaged or missing, contact your distributor.

Make sure your computer model meets your specific needs. Refer to the Specifications Section to confirm required features. The model number of your computer is displayed on the lower front side of the computer and also underneath a battery.

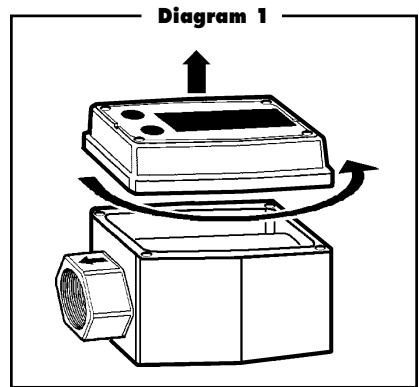
INSTALLATION

If you ordered your computer electronics with a turbine housing, it is installed at the factory.

If you ordered your computer separately from your turbine, simply mount the computer on the turbine with the four screws at the corners of the faceplate. Make sure the O-ring is fully seated before tightening the screws.

If you ordered the computer with turbine and an accessory module, please review and thoroughly understand all installation instructions before proceeding.

All GPI turbines are designed to measure flow in only one direction. The direction is indicated by the arrow cast-molded in the turbine outlet. If the computer display is upside down, remove the four screws, turn the display 180° and reinstall the screws. See Diagram 1.



Avoid electronically "noisy" environments. Install at least 6 inches (15.2cm) away from motors, relays, or transformers.

Our computer electronics are Factory Mutual Approved and carry a Class 1, Division 1 Approval for hazardous environments. In addition, GPI meters have NEMA Type 4 enclosures.

To ensure accurate measurement, remove all air from the system before use.

It is strongly recommended that accuracy be verified prior to use. To do this, remove all air from the system, measure an exact known volume into an accurate container, and verify the volume against the readout or recording equipment. If necessary, use a correction factor to figure final volume. For best results, accuracy should be verified periodically as part of a routine maintenance schedule.

OPERATIONS

All operations are reflected in the LCD readout. The top line identifies the calibration curve. The middle line reflects flow information. The bottom line shows information from the totalizer. Words or “flags” display on the top and bottom line to further identify specific information.

The computer is powered by field replaceable batteries. When the readout becomes dim or faded, the batteries need to be replaced. Reference the Maintenance Section for details.

NOTE: Operations can be practiced prior to installation. To simulate flow conditions, blow gently through the turbine.

Turn On

The meter is on when any display is present. It turns on automatically when liquid flows through the meter. It can be turned on manually by pressing and releasing the DISPLAY button.

Turn Off

Whenever no flow has been sensed for one minute, the unit automatically switches to a power-saving “sleep” mode with a blank display. The unit will automatically “wake up” the moment any flow is sensed and will remain awake as long as fluid is flowing. Totals are never lost during sleep periods.

Batch and Cumulative Totals

Total flags are displayed on the bottom line. The Cumulative Total (labeled TOTAL 1 LOCKED) is the total of all fluid measured since the meter’s power was connected. (At your first use, the Cumulative Total may not read zero because of calibration at the factory.) The Batch Total (labeled TOTAL 2) indicates flow during a single use.

Clearing a Totalizer

The Batch totalizer register (TOTAL 2) may be independently cleared to 0.00 at any time. To clear a batch totalizer, with the desired totalizer displayed, press and hold the DISPLAY button. At about three seconds, the displayed total will be cleared to “0.00.” You can do this even while fluid is flowing, in which case counting will resume after you release the DISPLAY button.

The Cumulative totalizer register is labeled as TOTAL 1 LOCKED indicating that it cannot be manually zeroed (See Figure 2). The Cumulative totalizer can be cleared only when the batteries are removed or go dead or when the Cumulative Total reaches the maximum value of 999,999.

Figure 2



Changing Display Registers

To change to another totalizer register or to FLOWRATE mode during normal operation, watch the bottom line display flags while you briefly press and release the DISPLAY button. When you press and release the display buttons, the mode will advance as follows: TOTAL 1 LOCKED (Cumulative Total), TOTAL 2 (Batch Total), FLOWRATE, TOTAL 1 LOCKED (etc.). You can change registers at any time, even during flow. Non-visible totalizer registers will continue to accumulate.

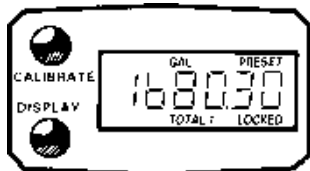
NOTE: Generally, display registers change when the buttons are released.

Factory and Field Calibration Curves

GPI “09” series flow computers have enhanced calibration features. All calibration information is visible to the user as words in the upper part of the display, above the numeric digits.

All units will be configured with a “factory” calibration curve, for which units of gallons or litres may be selected by the user (“GAL” or “LTR” will be visible). This curve is NOT user adjustable: the word “PRESET” is displayed to show this. (See Figure 3) The factory calibration is stored permanently in the computer’s memory.

Figure 3



The “field” calibration curve(s) may be set by the user, and can be changed or modified at any time using the calibration procedure described below in the CALIBRATION section. Totals or flowrate derived from the field calibration are visible when the field calibration setting is selected (“CAL B” or “CAL C” will be visible).

Selecting a Different Calibration Setting

You can switch between GAL and LTR modes at will without “corrupting” totalizer contents. For example, the computer can totalize 10.00 gallons. If the user switches to LTR mode, the display will immediately change to “37.50” (the same amount in units of litres). GAL / LTR switching also works in FLOWRATE mode.

To select a different calibration setting, first press and hold the CALIBRATE button. Continue to hold it while also briefly pressing and releasing the DISPLAY button (you may then also release the CALIBRATE button). The flag indicators in the upper area of the display will change to show the newly selected calibration setting. Calibration settings change in this order: GAL, LTR, CAL B, CAL C, GAL (etc.). While fluid is flowing only the GAL and LTR selections may be made, however, when NO fluid flow is occurring, any setting may be selected.

Flowrate Mode

The Rate of Flow feature is accessed by briefly pressing and releasing the DISPLAY button as described above. When this feature is activated, the word “FLOWRATE” displays to the left on the bottom line (See Figure 4) and the numbers in the middle of the display reflect the rate of flow (instead of total). Units are set to update the display

every five seconds, so the first reading after flow starts or changes and the last reading after flow stops or changes will not be correct. This is normal.

Figure 4



Propeller

A small propeller displays to indicate liquid is flowing through the meter.

CALIBRATION

Factory Calibration settings are programmed into each flowmeter during production, and are correct for light fluids such as water, gasoline, or diesel fuel. Factory Calibration is completed with either stoddard test solvent (on 1" and smaller flowmeters) or water (on 1-1/2" and larger flowmeters) at 70°F (21°C). Readings using the standard factory calibration curves may not be accurate in some situations – for example, if the unit measures a “heavy” fluid such as motor oil, especially under extreme temperature conditions.

For improved accuracy under such conditions, the GPI flow computer allows for “field” calibration, that is, user entry of custom calibration parameters. A “single point” calibration may yield acceptable accuracy with light liquids, however, heavy liquids may require five or more calibration points to achieve a high level of accuracy. Up to 15 custom calibration points can be entered.

NOTE: A Field Calibration below the minimum flowrate can adversely effect accuracy.

The use of a uniformly dependable, accurate calibration container is highly recommended for the most accurate results. Due to high flowrate, it is strongly recommended that

Field Calibration of 1-1/2" and 2" meters be completed with a combination of volume and weight using fine resolution scales.


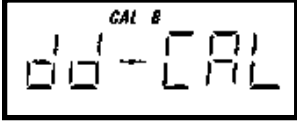
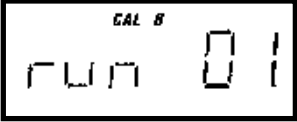
For the most accurate results, dispense at a flowrate which best simulates your actual operating conditions. Avoid "dribbling" more fluid or repeatedly starting and stopping the flow – these actions will result in less accurate calibrations.



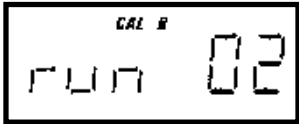
Make sure you meet the meter's minimum flowrate requirements.

- 1/2 inch meters - 1 GPM (3.8 LPM)
- 3/4 inch meters - 2 GPM (7.5 LPM)
- 1 inch meters - 5 GPM (18.8 LPM)
- 1-1/2 inch meters - 10 GPM (37.5 LPM)
- 2 inch meters - 20 GPM (75 LPM)



For best results, the meter should be installed and purged of air prior to Field Calibration.

Dispense-Display Field Calibration Procedures

Your Actions	Notes
<p>1. Hold down CALIBRATE while pressing and releasing DISPLAY until the Field Calibration curve appears ("CAL B" or "CAL C" message will be displayed). Release both buttons.</p> <div style="text-align: center; margin: 10px 0;">  </div>	<p>Remember that Field Calibration curves are not preset.</p>
<p>2. To calibrate, press and hold the CALIBRATE button. While continuing to hold CALIBRATE, also press and hold the DISPLAY button. Hold both buttons for about 3 seconds until you see a blinking "dd-CAL" message. Once the "dd-CAL" message appears, release both buttons. You are now in field calibration mode.</p> <div style="text-align: center; margin: 10px 0;">  </div>	<p>This step puts the unit in dispense-display field calibration mode ("dd-CAL").</p>
<p>3. Once the buttons have been released from Step 2, the display will show the blinking message "run 01."</p> <div style="text-align: center; margin: 10px 0;">  </div>	<p>The computer is waiting for you to make a decision to either exit from field calibration mode or to begin a dispense run. If you want to exit the calibration now, go to Step 11.</p>
<p>4. If you want to continue with the calibration, but have not dispensed any fluid yet, make your final preparations to your pumping system, but don't start pumping yet.</p>	

Your Actions	Notes
<p>5. Start your pumping system so that fluid flows through the meter. The display will stop blinking and show the “run 01” message. Dispense into a container that allows you to judge the amount of fluid pumped. When you have pumped the desired amount (for example, 10 gallons), stop the fluid flow quickly.</p>	<p>When the computer displays a non-blinking “run 01” message, it is sensing fluid flow. For the most accurate results, dispense at a flow rate which best simulates your actual operating conditions. Avoid “dribbling” more fluid or repeatedly starting and stopping the flow - these actions will result in less accurate calibrations.</p>
<p>6. Once the flow has stopped, briefly press and release both buttons. At this point the computer display will change to “0000.00” with the left-hand digit blinking.</p> 	<p>When the display shows “0000.00” the computer has stopped “watching” for fluid flow and is now waiting for you to enter some numbers.</p>
<p>7. Enter the volume (amount) of fluid that you dispensed (for example, if your 10-gallon container is full, enter “10.00” for gallons or “37.5” for litres). To enter numbers use the CALIBRATE button to change the value of the digit that is blinking and use the DISPLAY button to shift the “blink” to the next digit.</p> 	
<p>8. Once the correct number has been entered, briefly press and release both buttons. The display will now change to a blinking “run 02” message.</p> 	<p>You have installed the new cal-curve point. You are ready to end calibration (Step 10) or enter another new calibration point (Step 9).</p>
<p>9. To enter another calibration point, go back and repeat Steps 3 through 8.</p>	<p>It is possible to set up to 15 cal-curve points, and the “run ##” message will increment each time you repeat the calibration process (run 01, run 02, run 03, etc., up to run 15).</p>

Dispense-Display Field Calibration Procedures - cont'd.

Your Actions	Notes
<p>10. To end calibration, press and hold both buttons for about 3 seconds until you see the “CAL End” message.</p> 	<p>After you release the buttons, the computer will resume normal operations with the new cal point(s) active.</p>
<p>11. If you HAVE NOT dispensed any fluid, you can exit calibration without changing the cal curve. If the message “run 01” is showing and you have not dispensed any fluid, hold both buttons for about 3 seconds until you see a “CAL End” message.</p> 	<p>After you release the buttons, the computer will resume normal operation and the old curve (if you have entered one in the past) is still intact.</p>

USER CONFIGURATION

The new “09” series GPI flow computer has been programmed with many new features, most of which can be enabled by the end user by way of a configuration process. By disabling “unnecessary” features, day-to-day flowmeter operation can be greatly simplified, making the unit easier to use. There are several features that GPI disables by default when shipping standard meters. (For example, K-Factor Entry Field Calibration, described below.) For more advanced users, it may be desirable to enable ALL possible features. User configurable features include:

- Totalizers/Modes Enabled (Cumulative Total, Batch 1 Total, Batch 2 Total, Flowrate Mode)
- Flowrate Update Intervals (1, 2, 5, 10 seconds; 1, 2, 10 minutes; 1 hour.)
- Flowrate Timebase (Units per Minute, Hour, or Day)

- Factory Calibration Curve Units Enabled (Gallons, Imperial Gallons or Litres)
- Field Calibration Curve B and/or C Enabled
- Dispense/Display or K-Factor Entry Calibration
- Maximum Resolution for Field Calibration (0, 1 or 2 Decimals)

Changing Configuration Settings

Access to the configuration process is restricted for security until a “password” is entered. Contact your distributor or GPI to get the password and instructions to unlock and reset configuration settings. This information is also available on the GPI website. Configurations are entered and stored as six-digit “codes” where each digit represents a setting for one of the configuration options. New configuration settings are stored in the

computer's long-term memory and will not be lost either in OFF mode or during battery change.

K-Factor Entry Field Calibration

Presently all GPI computers are programmed with two different field calibration methods, only one of which is active, the "dispense-display" calibration procedure described above. It is possible to activate "K-Factor entry" field calibration by changing configuration settings. Contact your distributor or GPI to get the correct password, configuration code, and instructions for this calibration method. This information is also available on the GPI website. K-Factor Entry Calibration is similar to the dispense-display calibration procedure described above, and allows up to 15 calibration points to be entered using meter K-Factor inputs.

MAINTENANCE

The computer electronics are powered by lithium batteries which provide at least 9,000 hours (1 year). Under most conditions, the batteries need to be replaced about once a year. Removing the batteries before storing the meter will extend battery life. If the meter's readout should become dim or blank, the batteries should be replaced. Replacement batteries can be ordered from your distributor or the factory. See details in the Parts Section.

When batteries are disconnected or fail, the Batch and Cumulative Totals return to zero. Factory and Field Calibration Curves are retained in the meter's computer when power is lost.

It is strongly recommended that battery check and terminal cleaning be a part of a routine maintenance schedule. Battery terminals should be cleaned annually. Batteries can be replaced without removing the meter from the piping system.

Replace Batteries

1. Remove the corner screws from the meter face and lift the computer electronics from the turbine.
2. Remove the batteries.
3. Check the battery terminals and remove any corrosion.
4. Install the new batteries and make sure the positive posts are positioned correctly. When the batteries are installed correctly, the computer powers on automatically and the readout displays information.
5. Make sure the O-ring is fully seated before placing the computer electronics on the turbine. Tighten the four screws.
6. Do not clean exterior of computer assembly with Isopropyl Alcohol.

TROUBLESHOOTING

Symptom	Probable Cause	Corrective Action
Meter is not accurate	<ol style="list-style-type: none"> 1. Field Calibration not performed properly 2. Factory Calibration not suitable for liquid being measured 3. Meter operated below minimum flowrate 4. Meter partially clogged with dried liquid 5. Turbine bearings partially clogged with dried liquid 6. Sealant material wrapped around rotor 7. Installed too close to fittings 8. Installed too close to motors or electrically "noisy" environment 	<p>Field calibrate again or select Factory Calibration.</p> <p>Perform a Field Calibration according to Calibration Section.</p> <p>Increase flowrate.</p> <p>Remove meter. Clean carefully. Make sure rotor spins freely.</p> <p>Remove meter. Clean carefully. Make sure rotor spins freely.</p> <p>Remove meter. Make sure rotor spins freely.</p> <p>Install correctly.</p> <p>Install correctly.</p>
Readout faded or blank	<ol style="list-style-type: none"> 1. Batteries weak, dead, or not connected 2. Computer defective 	<p>Remove computer, check and replace batteries if necessary.</p> <p>Contact the factory.</p>
Normal flowrate but meter does not count (Meter comes on when DISPLAY button pushed)	<ol style="list-style-type: none"> 1. Field Calibration not performed correctly 2. Rotor stuck or damaged 3. Sealant material wrapped around rotor 4. Computer defective 	<p>Field Calibrate again or select Factory Calibration.</p> <p>Remove meter. Make sure rotor spins freely.</p> <p>Remove meter. Make sure rotor spins freely.</p> <p>Contact the factory.</p>
Reduced flowrate and meter does not count (Meter comes on when DISPLAY button pushed)	<ol style="list-style-type: none"> 1. Meter clogged with dried liquids 2. Below minimum flowrate 	<p>Remove meter. Clean carefully. Make sure rotor spins freely.</p> <p>Increase flow.</p>

Symptom	Probable Cause	Corrective Action
Cannot get meter into field calibration	1. Factory Calibration (PRESET) curve active	Hold down CALIBRATE and push and release DISPLAY until PRESET flag goes off. Proceed with calibration according to the Calibration Section.
	2. Computer circuit board defective	Replace computer. Contact the factory.
	3. Button defective	Replace computer. Contact the factory.

SPECIFICATIONS

Standard Features Include:

- 2 Totalizing Registers
- 1 Factory Calibration Curve
- 2 Field Calibration Curves
- Rate of Flow Feature
- Flowrate Time Base in Minutes

Input Pulse Rate:

Minimum Pulse In: DC
 Minimum Coil Input: 10 Hz
 Maximum Raw: 1,000 Hz

K-Factor:

Minimum: .01 pulses/unit
 Maximum: > 999,999 pulses/unit

Field Calibration:

Minimum Time: 10 seconds

Readout Totals:

Minimum Display: 0.01
 Maximum Display: 999,999

Temperatures:

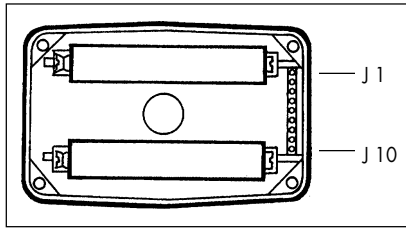
Operational: +14° to +140°F
 (-10° to +60°C)
 Storage: -40° to +158°F
 (-40° to +70°C)

If wider operating temperature ranges are desired, reference information on GPI Remote Kits.

Power:

Internal Power Supply: 2 Lithium Batteries at 3 volts each
 Minimum Battery Life: 9,000 hours of use (1 year)
 Optional External Power: 7-30 VDC

Computer Electronics Terminal Connections



J-1 Reset

Programming interfaces. Not accessible to user.

J-2 Pulse Signal Output

This supplies a high-level amplified open collector signal. Output will withstand a maximum open-circuit voltage of 60 volts DC and a maximum closed-circuit of 100 mA.

J-4 Pulse Signal Input

Requires a sine or square wave with open-circuit voltage of 3-30 volts P-P, a maximum rise/fall rate of 0.01 V/ μ second and a maximum frequency of 750 Hz.

J-5 Power Input

When used with Ground (J1-6), this has reverse polarity protection, but no on-board voltage regulation. Supplied voltage must be 5.75 volts DC \pm 5%.

J-6 Ground

J-7, 8, 9, 10 Programming interfaces. Not accessible to user.

PARTS

The factory, when provided with model number and serial number, can replace your entire Computer Electronics Assembly.

Order replacement kits, parts, and accessories with the part numbers given here.

Part No.	Description
113520-1	Battery Replacement Kit
901002-52	O-Ring
116000-1	Large (5 gal.) Calibration Container

SERVICE

For warranty consideration, parts, or other service information, please contact your local distributor. If you need further assistance, call the GPI Customer Service Department in Wichita, Kansas, during normal business hours.

1-888-996-3837

To obtain prompt, efficient service, always be prepared with the following information:

1. The model number of your computer electronics.
2. The serial number or manufacturing date code of your computer electronics.
3. Specific information about part numbers and descriptions.

For warranty work always be prepared with your original sales slip or other evidence of purchase date.

Returning Parts

Please contact the factory before returning any parts. It may be possible to diagnose the trouble and identify needed parts in a telephone call. GPI can also inform you of any special handling requirements you will need to follow covering the transportation and handling of equipment which has been used to transfer hazardous or flammable liquids.

CAUTION: Do not return computer electronics or meters without specific authority from the GPI Customer Service Department. Due to strict regulations governing transportation, handling, and disposal of hazardous or flammable liquids, GPI will not accept computer electronics or meters for rework unless they are completely free of liquid residue.

**Copy the information located on the Turbine housing.
This information will be required by Customer Service.**

Model No: _____

Serial No: _____

MFD: _____

Distributor Name: _____

Distributor Phone Number: _____

Declaration of Conformity

Manufacturer's Name: Great Plains Industries, Inc.
Manufacturer's Address: 5252 East 36th Street North
Wichita, KS USA 67220-3205

Declares, that the product:

Product Name: Electronic Digital Meter
Model Numbers: 03*****
A1*****
A2*****
G2*****

*Model numbers include all combinations
of an alpha-numeric series as illustrated above.*

Conform to the following Standards:

EMC: EN 50081-1 (Reference EN 55022)
EN 50082-1

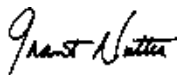
Energy - Limited Apparatus: EN 50021
I.P. Code: BS EN 60529

Supplementary Information:

"The products comply with the requirements of the EMC
Directive 89/336/EEC and the ATEX Directive 94/9/EC
(ANNEX VIII)."

I, the undersigned, hereby declare that the equipment specified above
conforms to the above Directive(s) and Standard(s).

Signature:



Full Name:

Mr. Grant Nutter

Position:

President

Place:

Great Plains Industries, Inc.

Wichita, KS USA

May 2003

Limited Warranty Policy

Great Plains Industries, Inc. 5252 E. 36th Street North, Wichita, KS USA 67220-3205, hereby provides a limited warranty against defects in material and workmanship. This product includes a 1-year warranty. The warranty shall extend to the purchaser of this product and to any person to whom such product is transferred during the warranty period.

The warranty period shall begin on the date of the original new equipment purchase. Warrantor's obligation hereunder shall be limited to repairing defective workmanship or replacing or repairing any defective part or parts. This warranty shall not apply if:

- A. the product has been altered or modified outside the warrantor's duly appointed representative;
- B. the product has been subjected to neglect, misuse, abuse or damage or has been installed or operated other than in accordance with the manufacturer's operating instructions.

To make a claim against this warranty, notice of claim must be given in writing to the company at its above address no later than 30 days after the expiration of the warranty period. Such notice shall identify the defect in the product. The company shall, within 14 days of receipt of such notice, notify the customer to either send the product, transportation prepaid, to the company at its office in Wichita, Kansas, or to duly authorized service center. The company shall perform all obligations imposed on it by the terms of this warranty within 60 days of receipt of the defective product.

GREAT PLAINS INDUSTRIES, INC. EXCLUDES LIABILITY UNDER THIS WARRANTY FOR DIRECT, INDIRECT, INCIDENTAL AND CONSEQUENTIAL DAMAGES INCURRED IN THE USE OR LOSS OF USE OF THE PRODUCT WARRANTED HEREUNDER.

The company herewith expressly disclaims any warranty of merchantability or fitness for any particular purpose other than for which it was designed.

This warranty gives you specific rights and you may also have other rights which vary from U.S. state to U.S. state.

Note: In compliance with MAGNUSON MOSS CONSUMER WARRANTY ACT – Part 702 (governs the resale availability of the warranty terms).



Factory Mutual Approved
Intrinsically Safe for Class I, II, III, Division 1, All Groups.



5252 East 36th Street North
Wichita, KS USA 67220-3205
TEL: 316-686-7361
FAX: 316-686-6746

GREAT PLAINS INDUSTRIES, INC.

"A Great Plains Ventures Subsidiary"

www.gpi.net

1-888-996-3837

GPI is a registered trademark of Great Plains Industries, Inc.
© 2004 by GREAT PLAINS INDUSTRIES, INC., Wichita, KS.

Printed in U.S.A.