



GFH-SAV1300 & GFH-PAV1300

High quality spring rewind hose reels in either Stainless Steel (- SAV) or painted Steel (- PAV). Durable structure with position adjustable hose guide. Supplied with 3/4" swan neck fitting for hose connection.

| | |
|----------------------------------|--|
| Working pressure | Max 80 bar – 2390 PSI |
| Connection inlet – outlet | M 1" – F 3/4" |
| Hole joint | 19mm |
| Max hose Ø | 1" (Ø ext. 28mm) |
| Max hose length | 3/4" - 18m (59ft) 1" - 15m (49ft) |
| Weight | 22kg |
| Swivel bracket | GFH-SAV-BRKT22 GFH-PAV-BRKT22 |

VERSION STAINLESS STEEL: Hose reels construction materials:

stainless steel AISI 304 AISI 303, swivel joint structure AISI 303, shaft

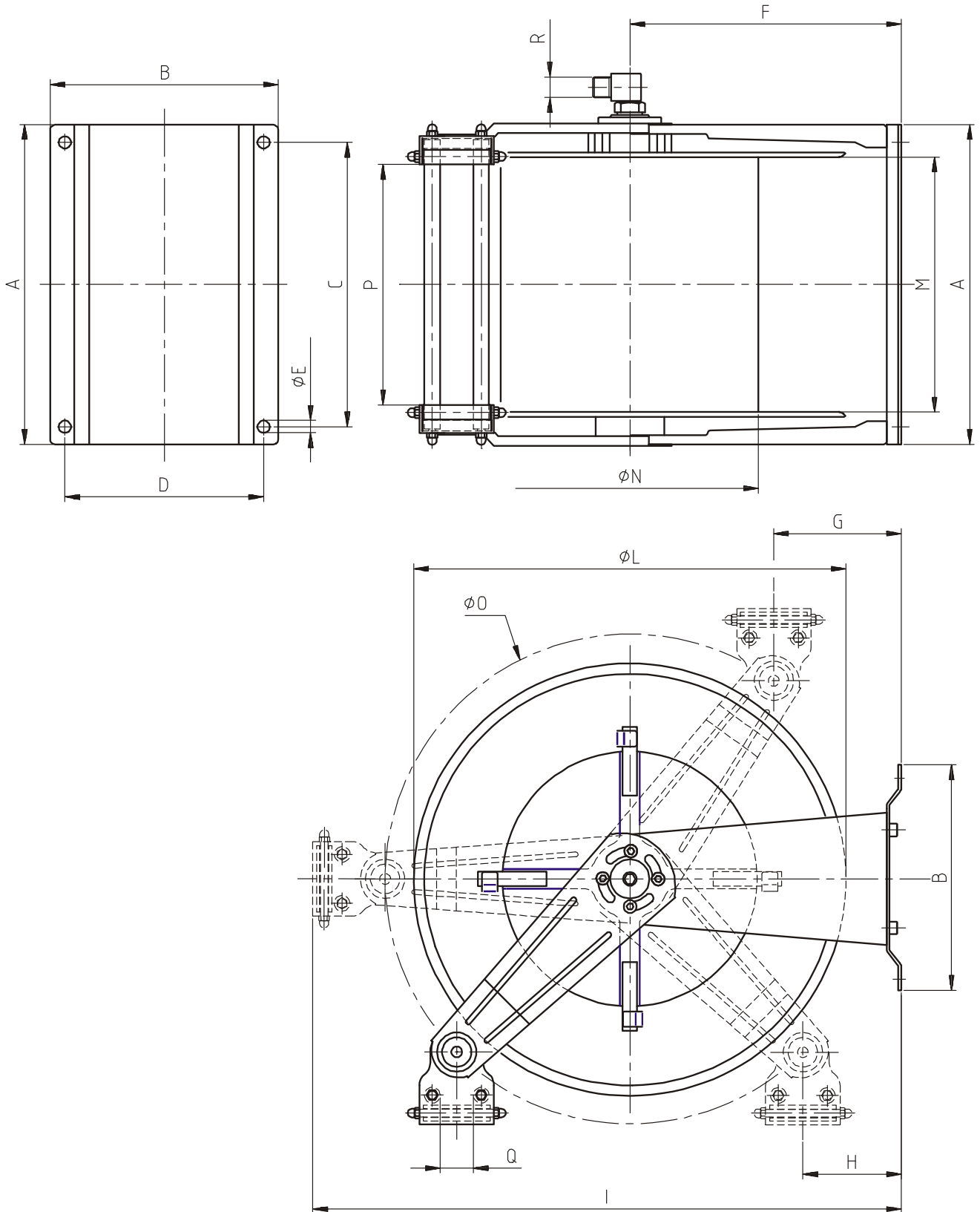
hardened and grinded AISI 416-420 (O-Ring EPDM).

VERSION CARBON STEEL: Hose reels construction materials: carbon

steel. Standard colour grey panted. Swivel joint structure in AVP galvanized

carbon steel and shaft hardened and milled AISI 416-420 (O-Ring EPDM)

Max working temperature: 150°C.



Dimensions (mm)

| | A | B | C | D | E | F | G | H | I | L | M | N | O | P | Q | R |
|-------------------------|-----|-----|-----|-----|----|-----|-----|-----|-----|-----|-----|-----|-----|-----|----|----|
| GFH-SAV1300/ PAV1300 | 445 | 233 | 415 | 205 | 13 | 285 | 110 | 100 | 580 | 440 | 287 | 260 | 470 | 280 | 40 | 1" |



Telephone: (01373) 822220 Fax: (01373) 825543
www.atkinsonequipment.com

Registered Office: Moat Road, West Wilts Trading Estate, Westbury, Wiltshire. BA13 4JF

Registered No. 1050233 England

